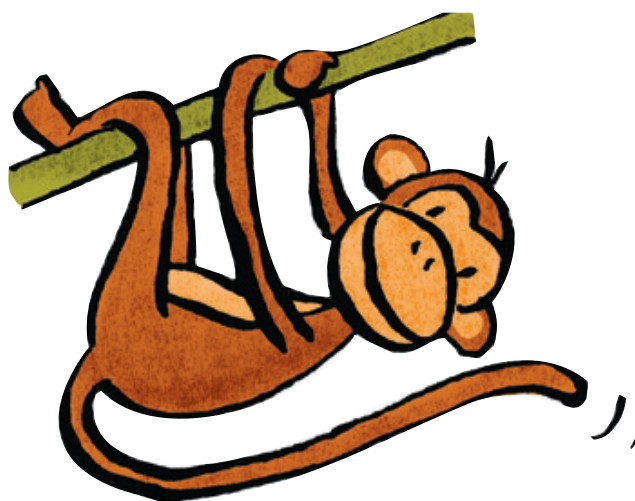
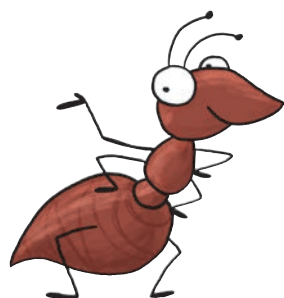
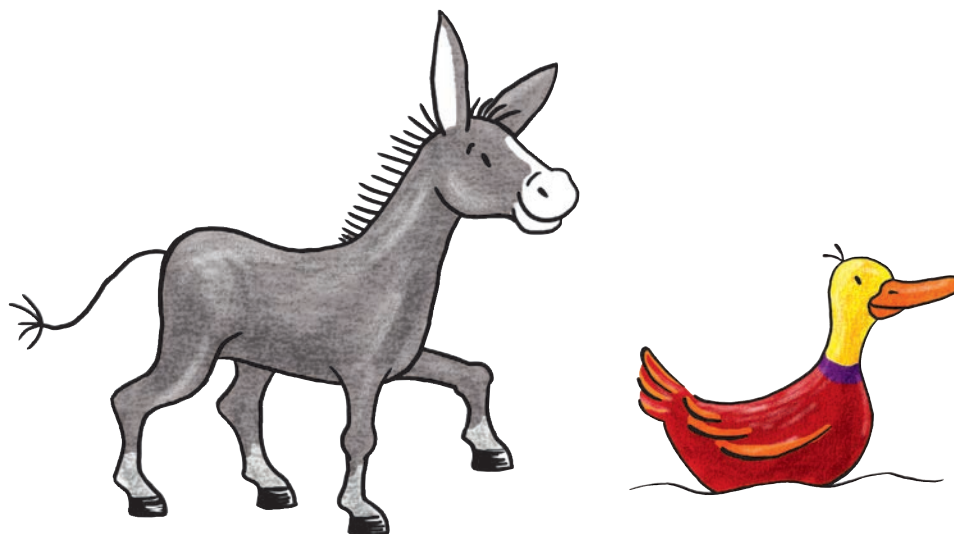
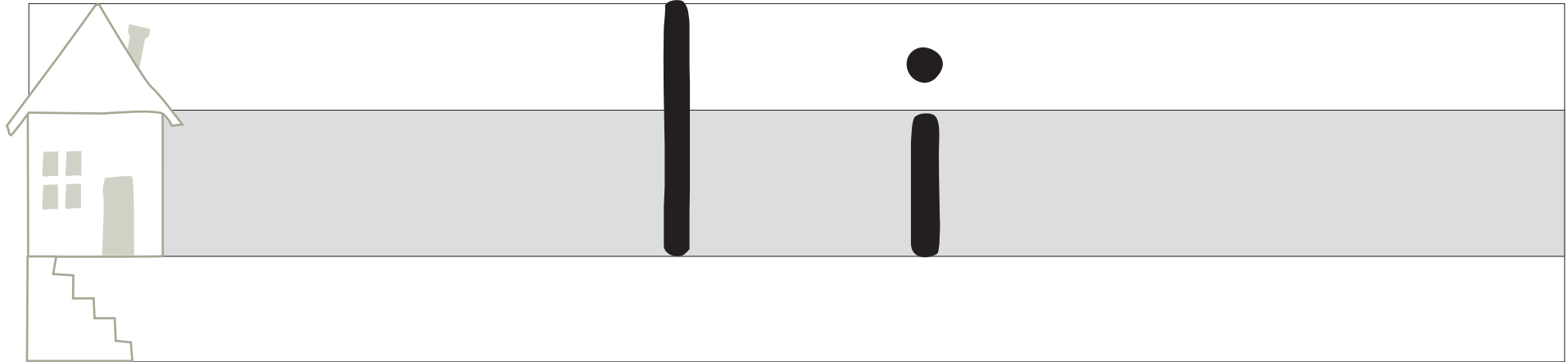


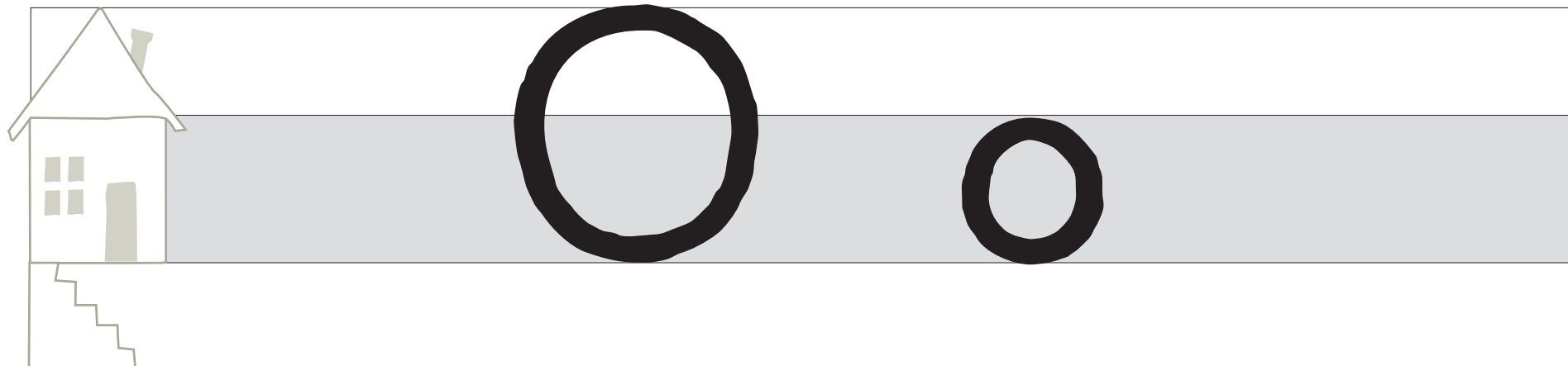
Zebra 1

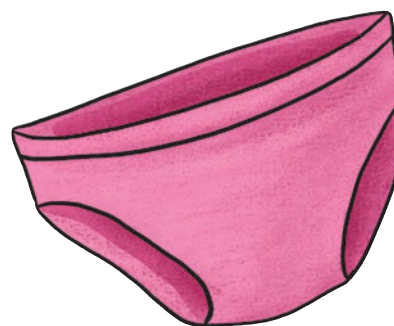
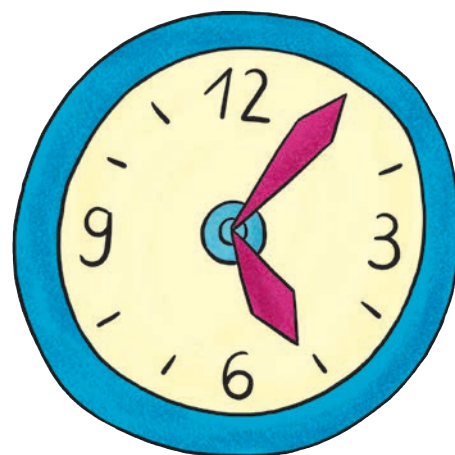
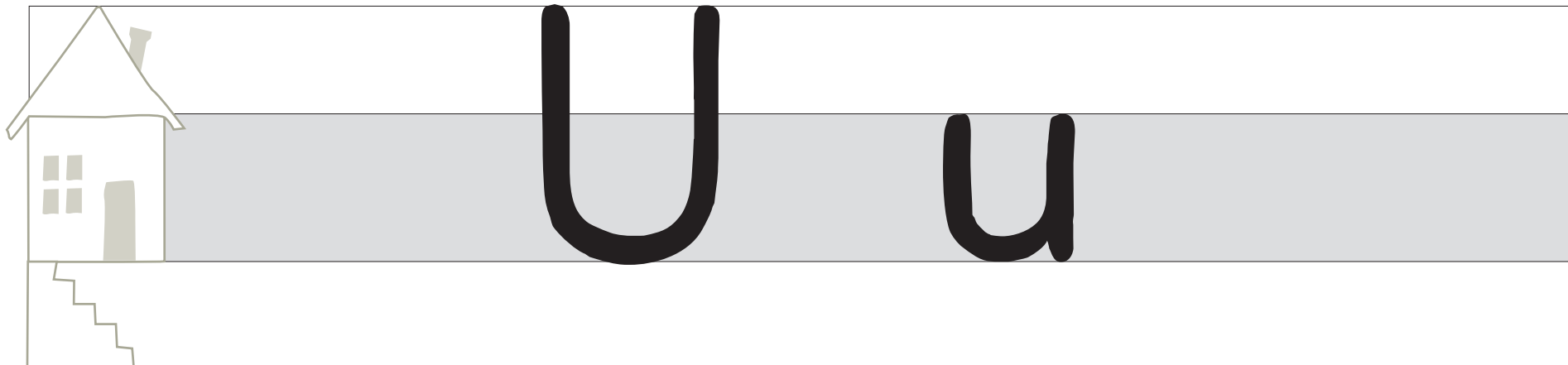
Lautbilder in Druckschrift

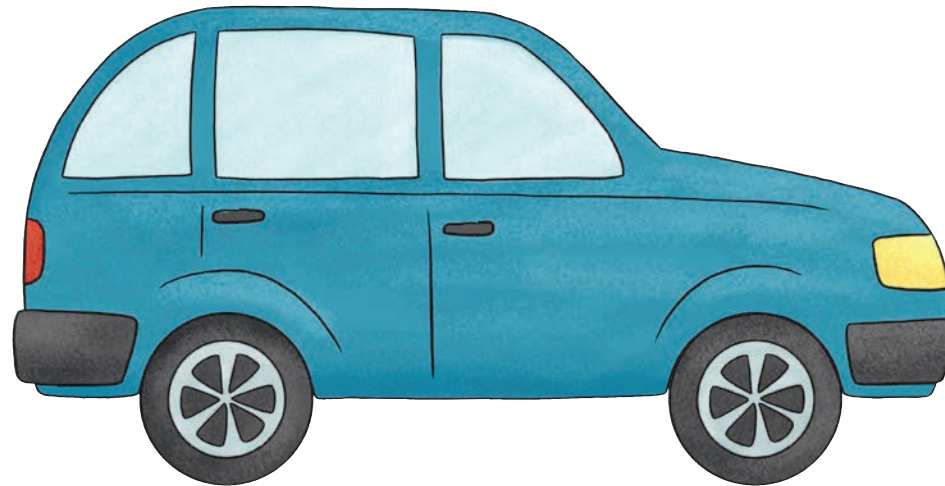
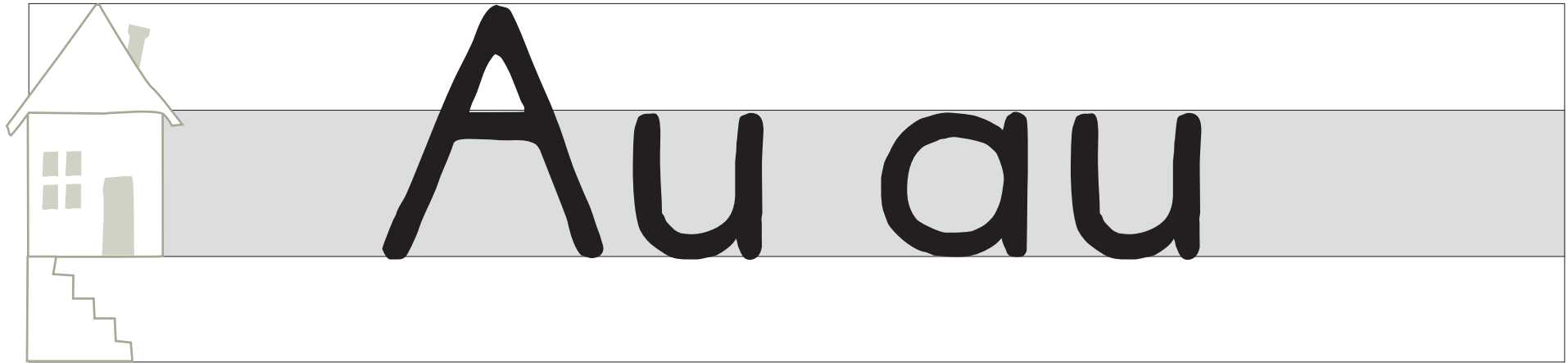






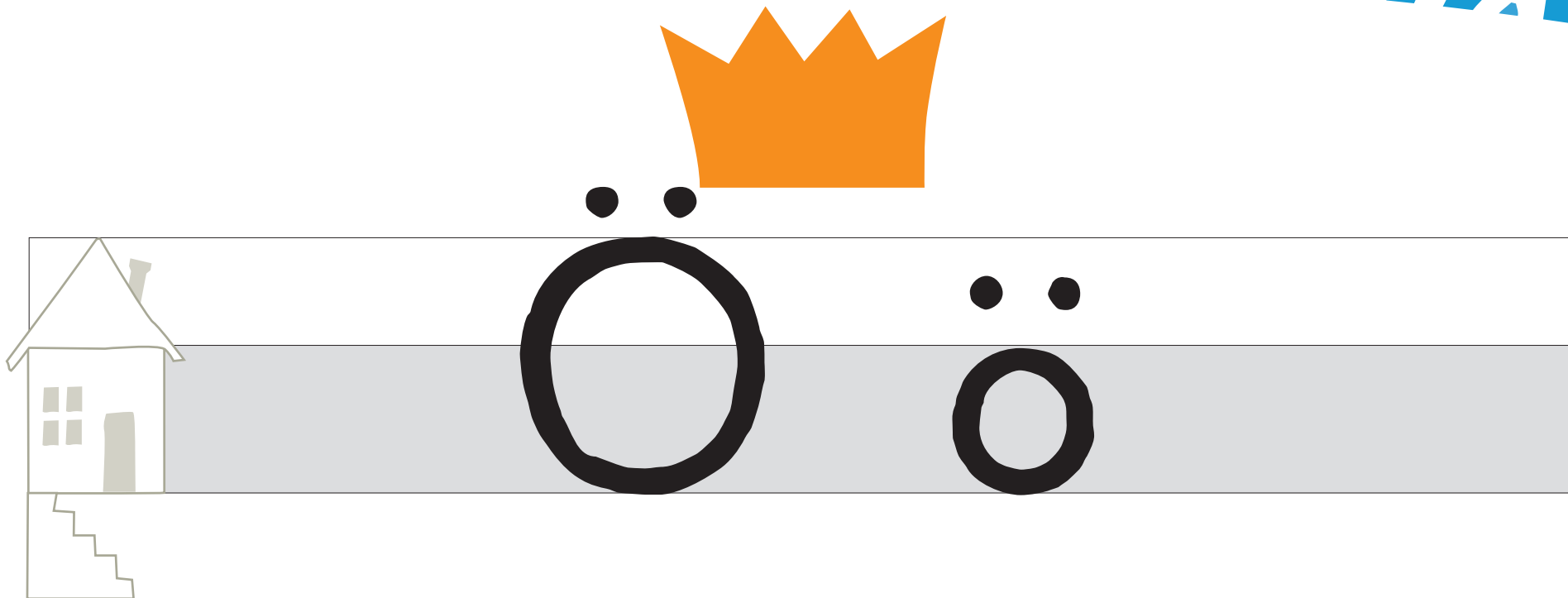






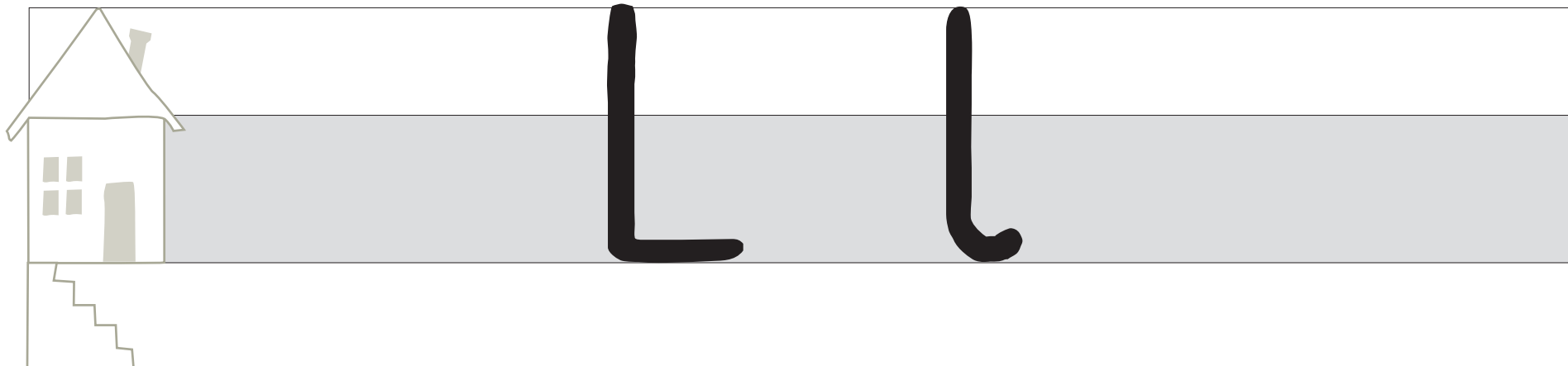


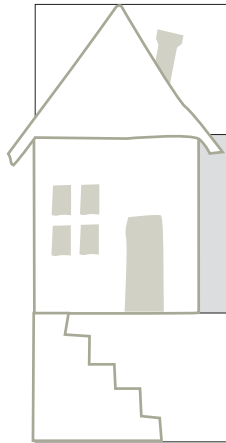




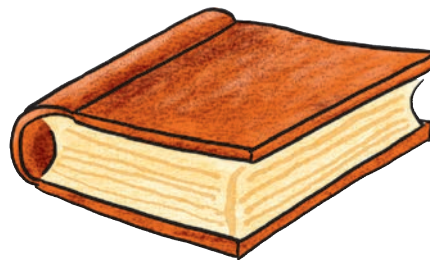


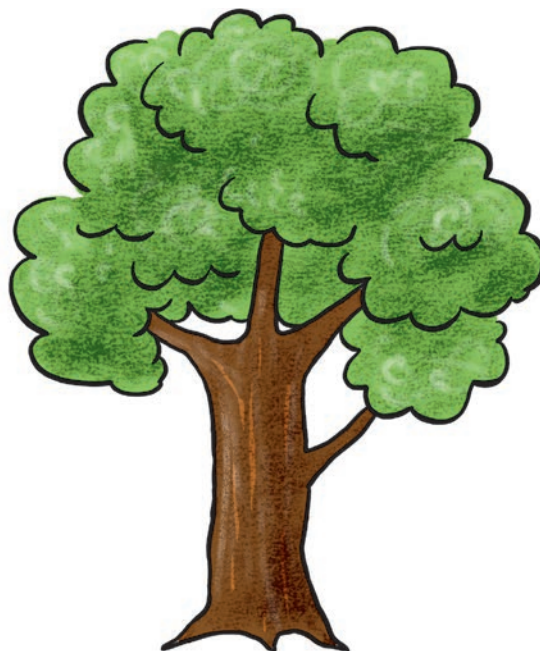


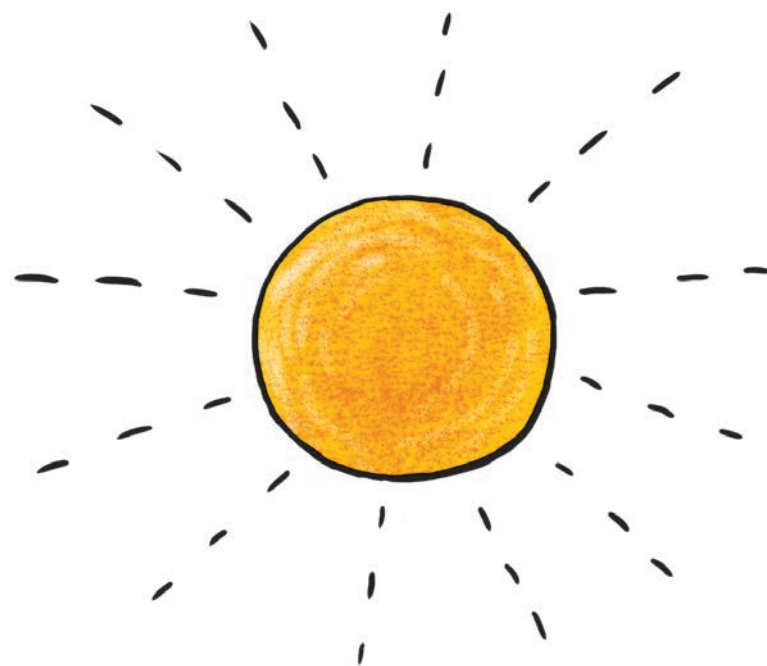


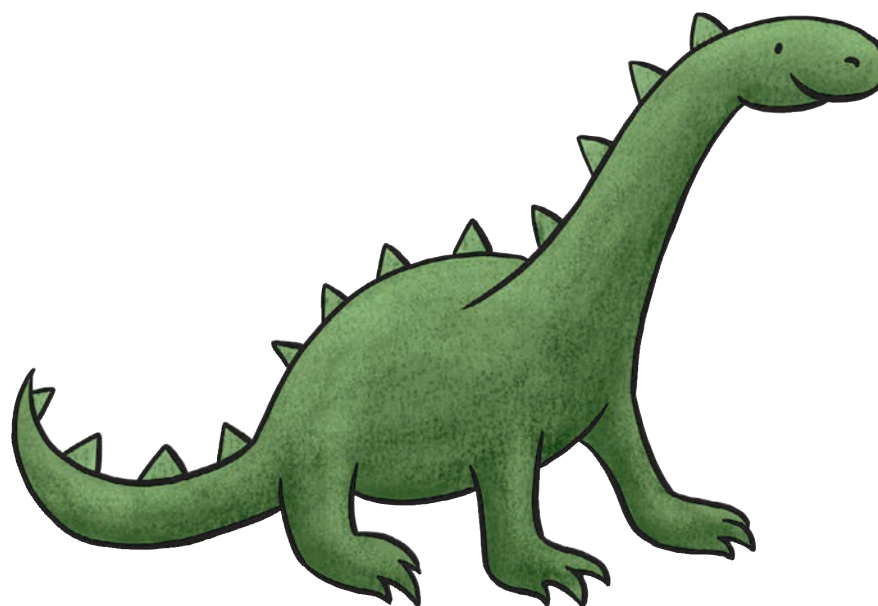
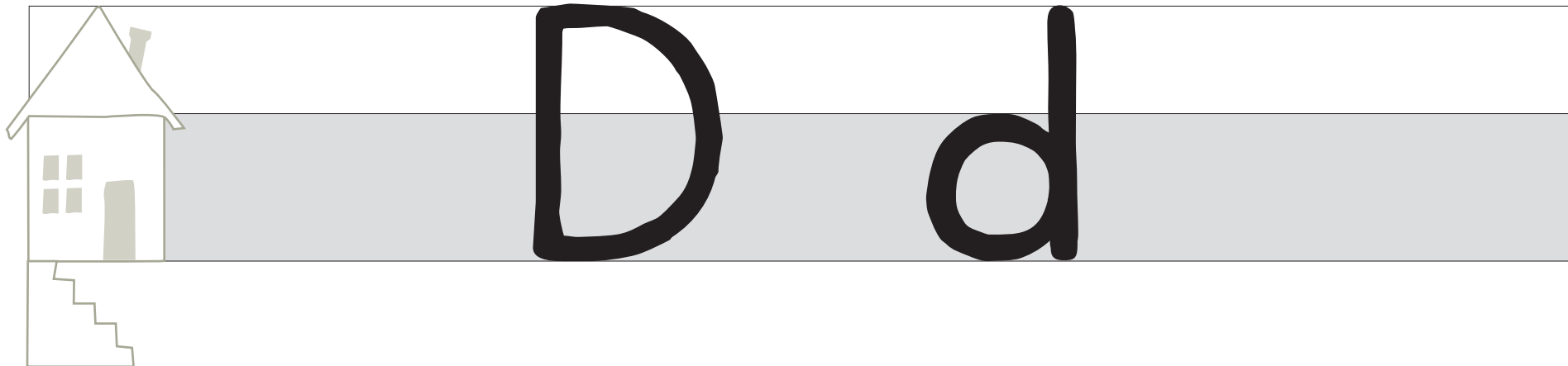


Ch ch





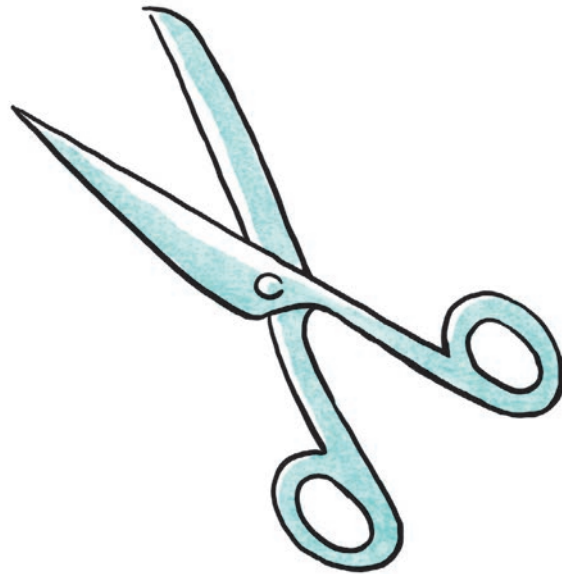


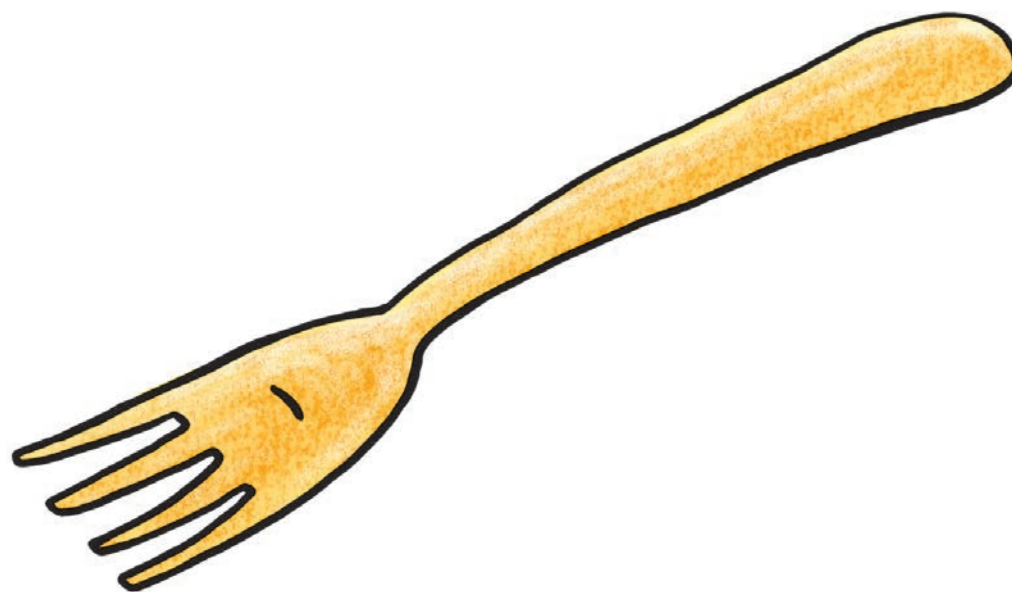


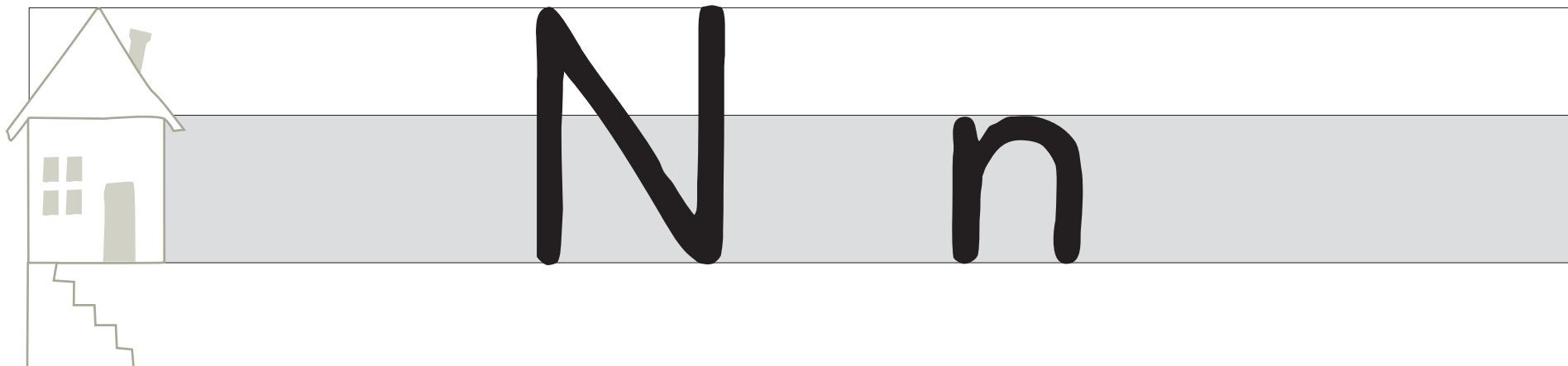


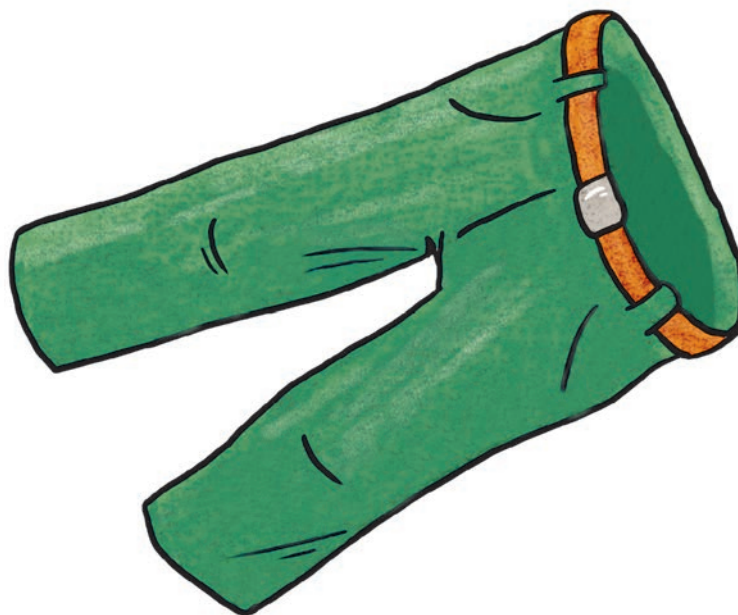
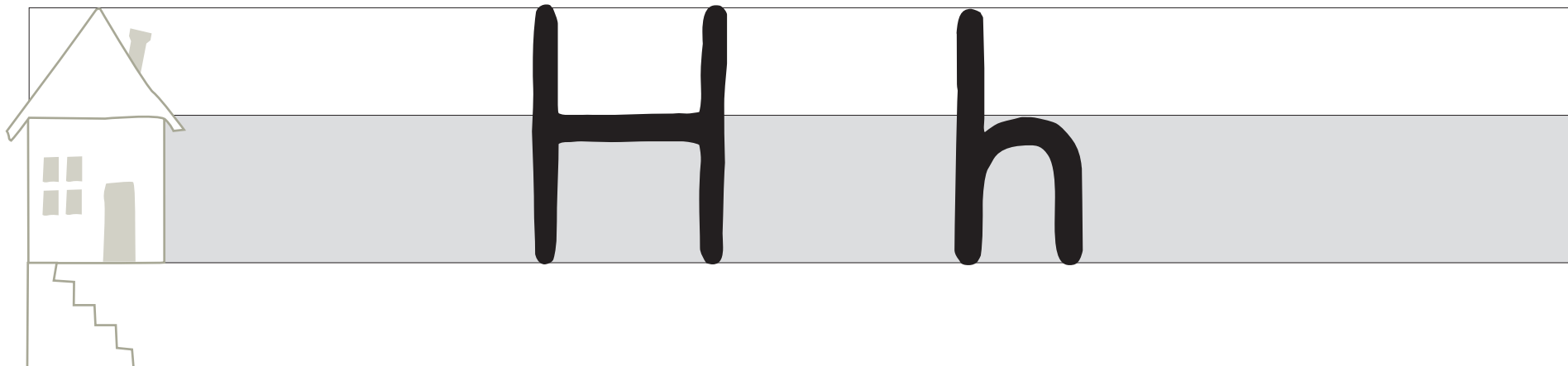


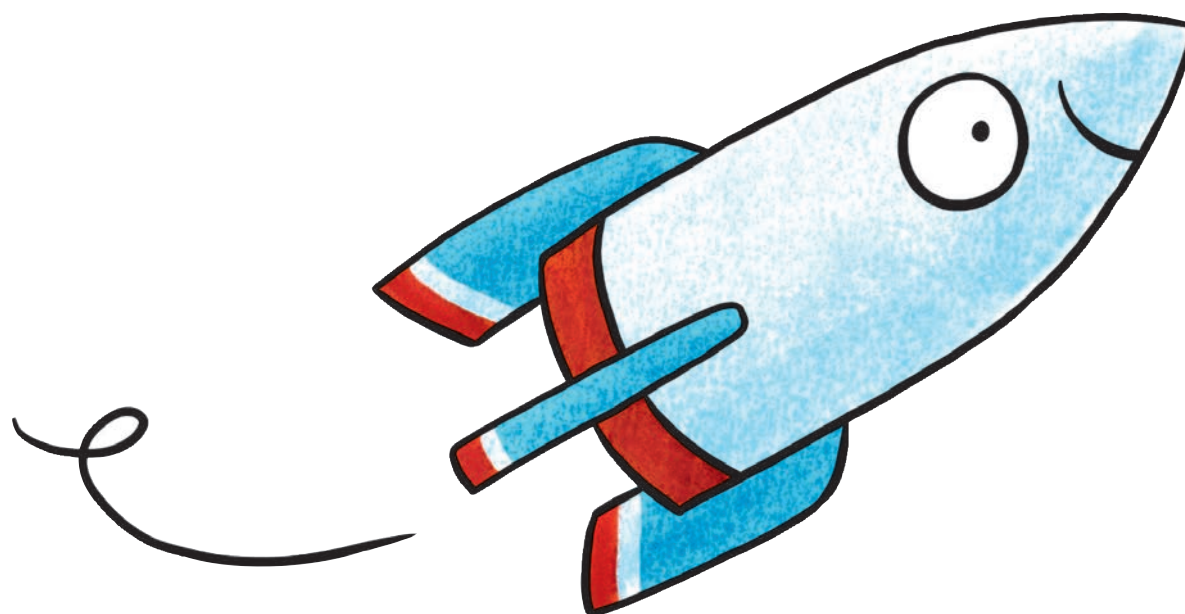
Sch sch

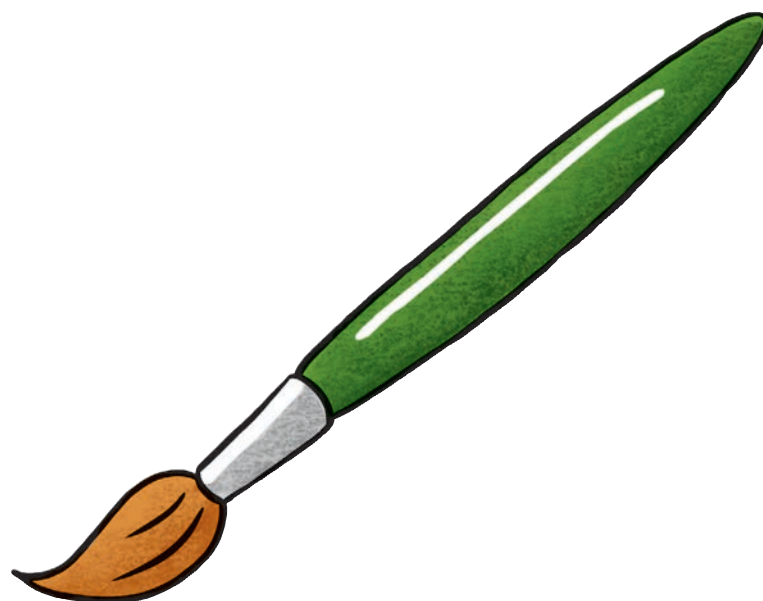
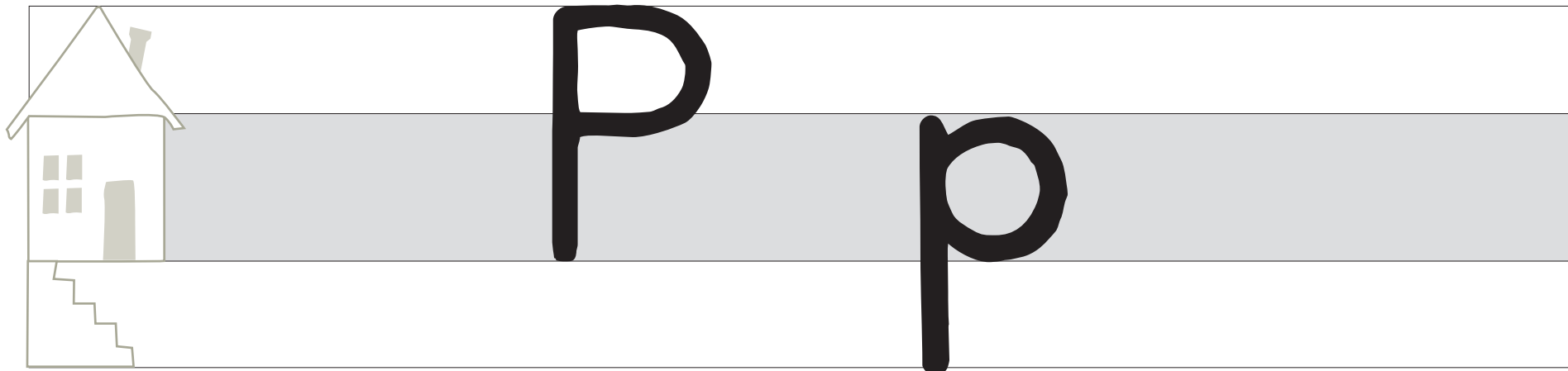


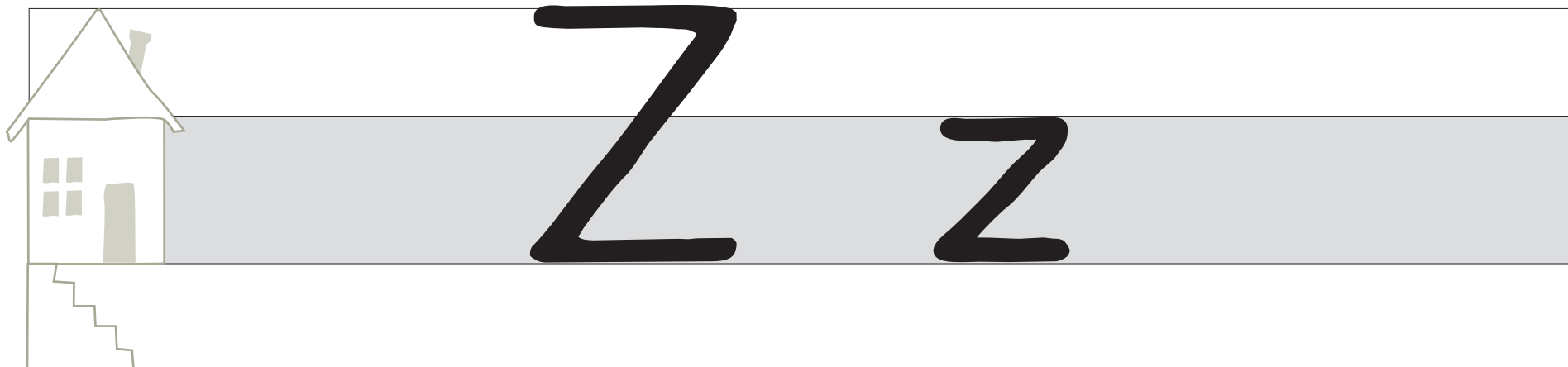


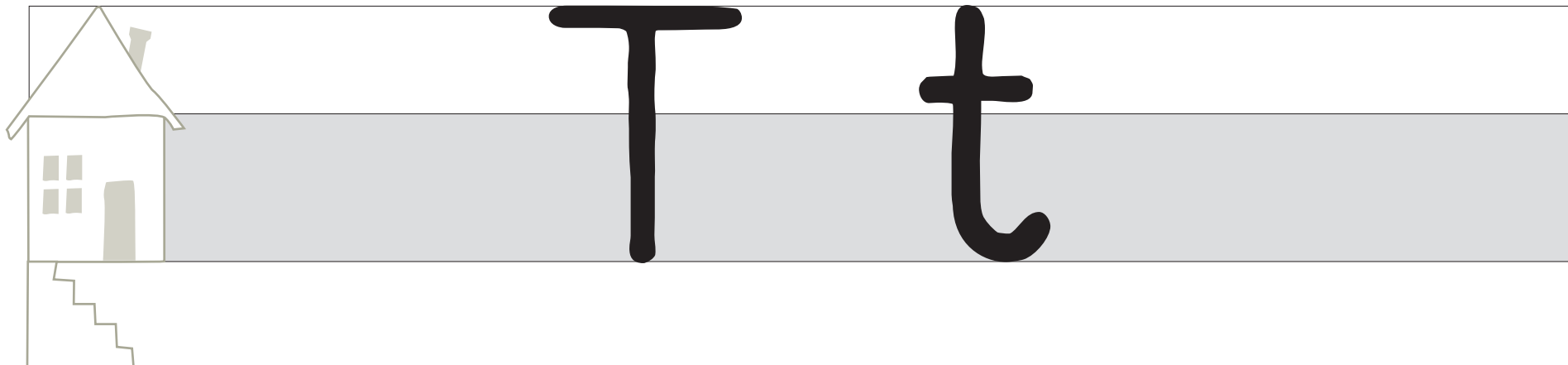


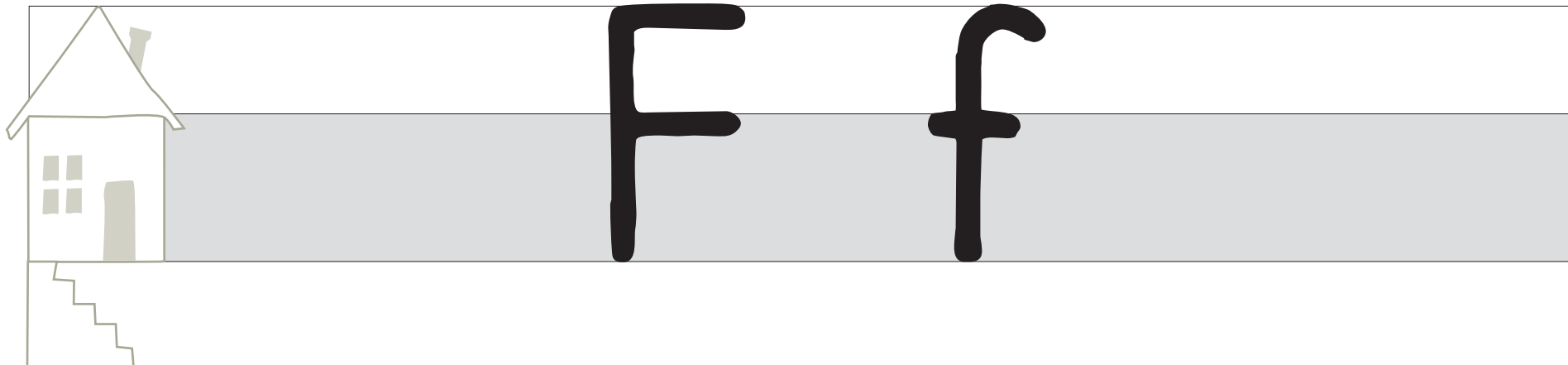




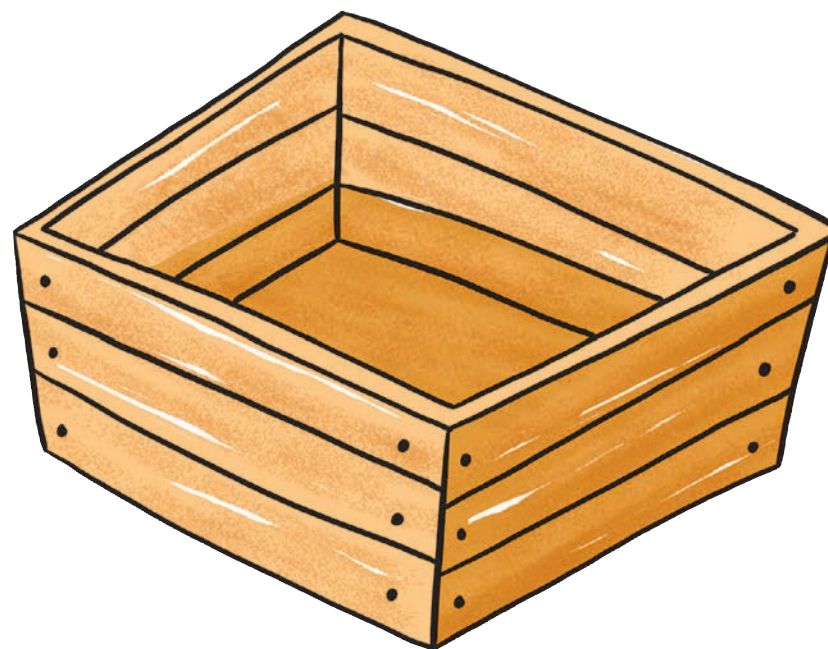


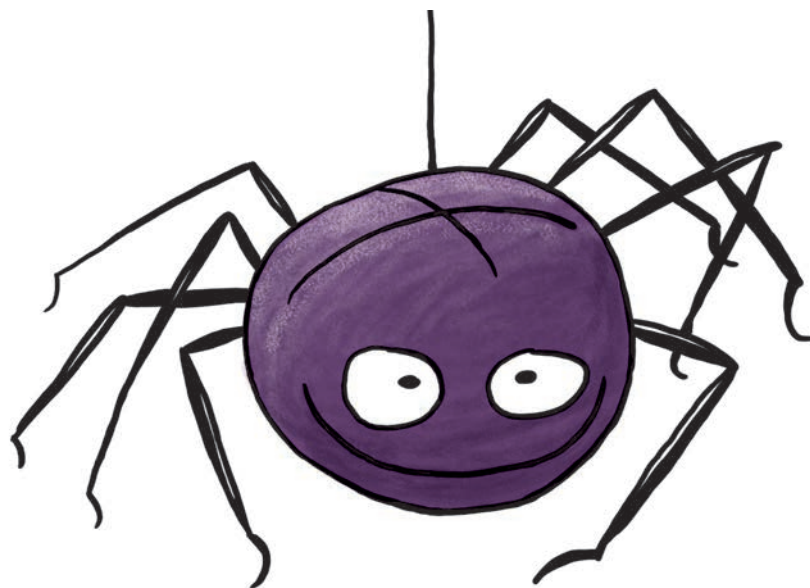
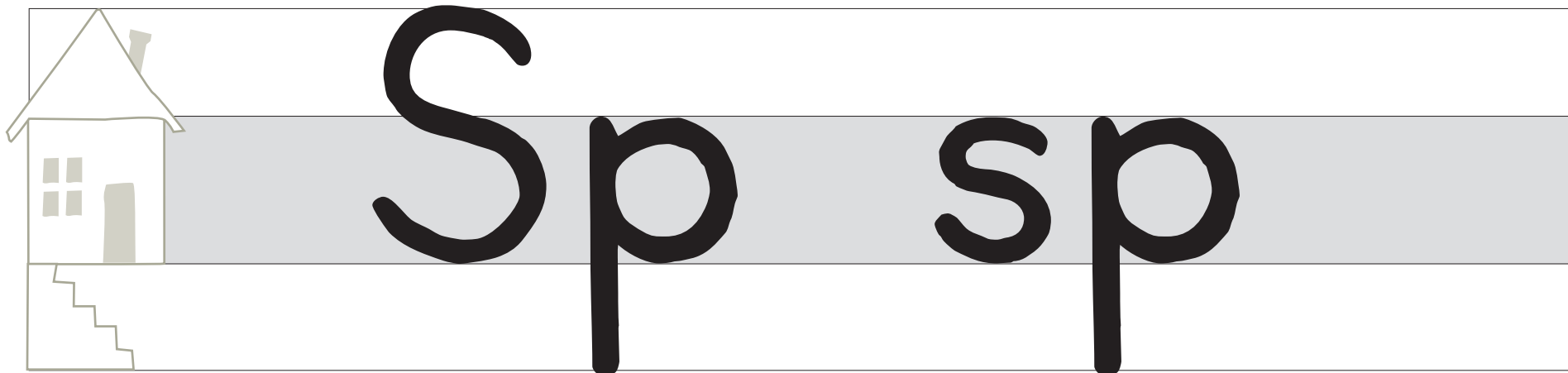


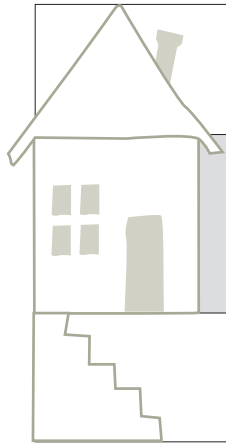











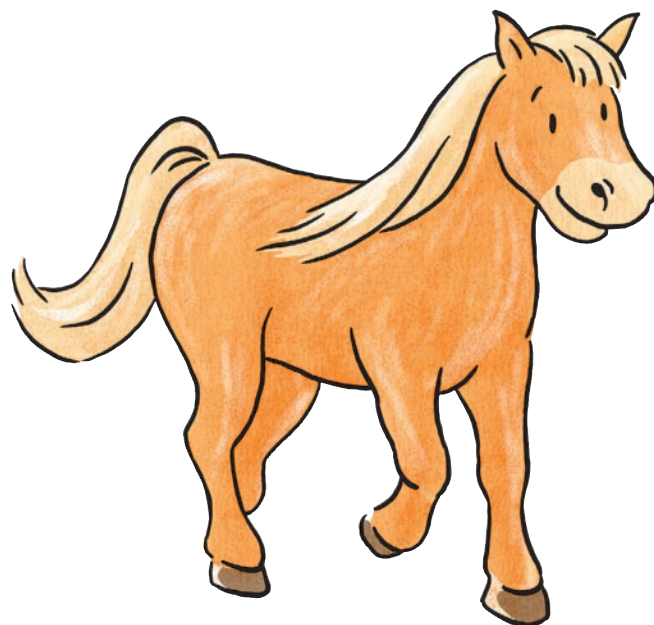


St st



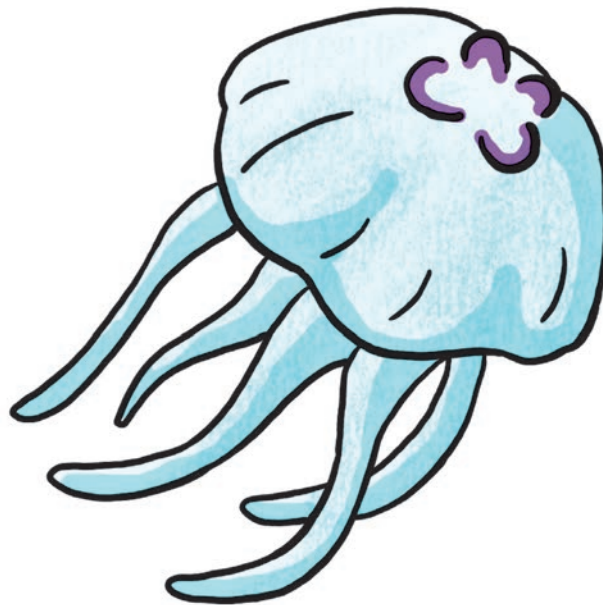


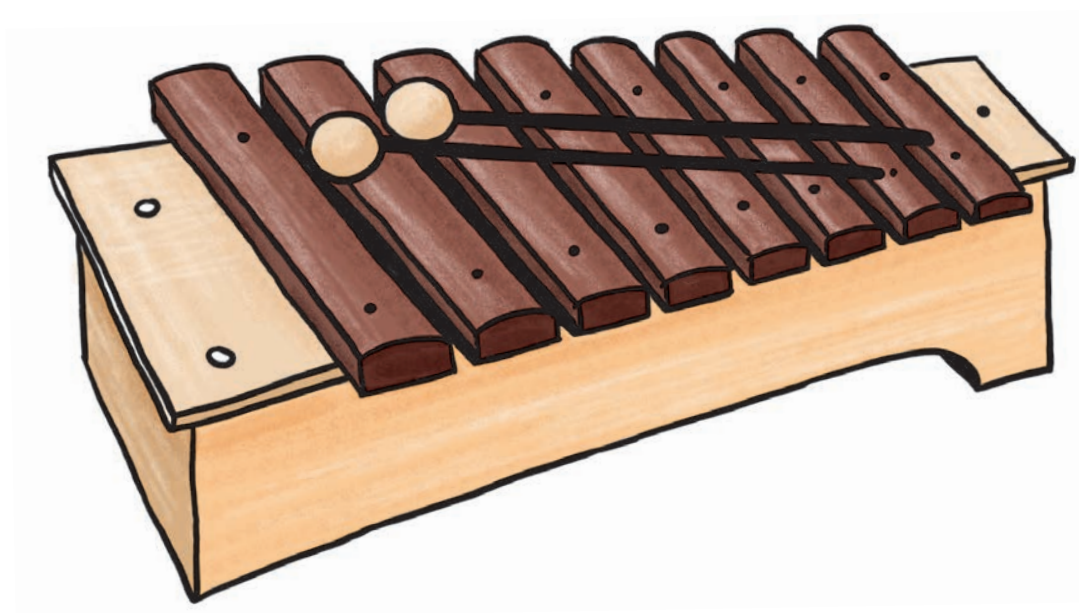
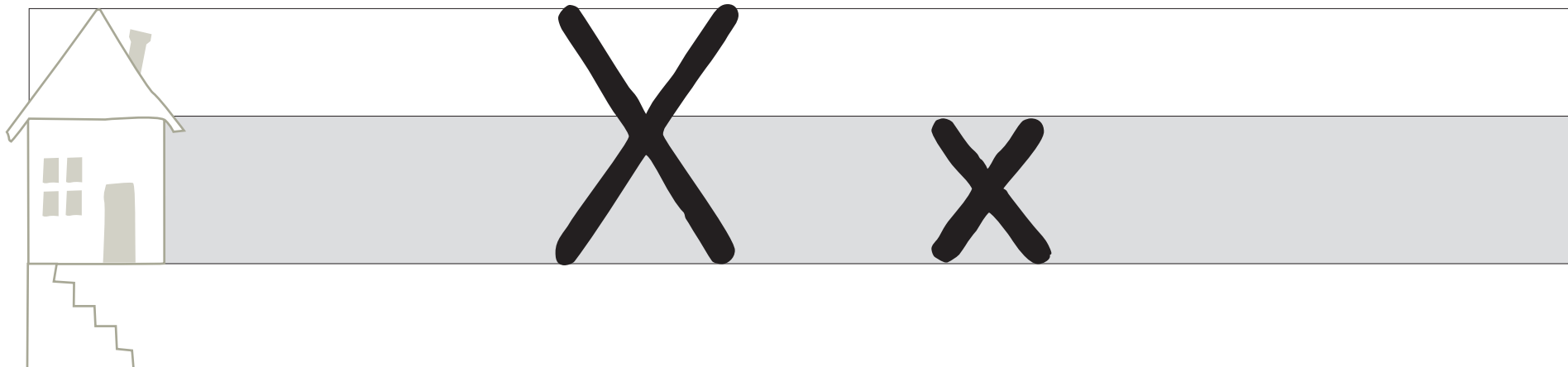
Pf pf

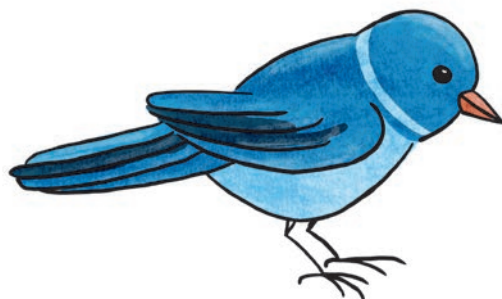
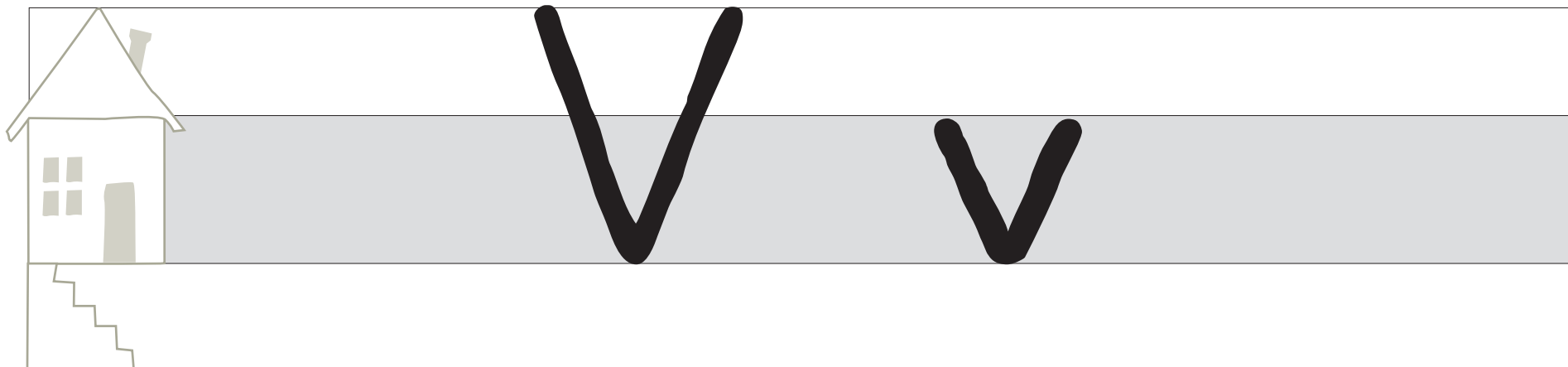


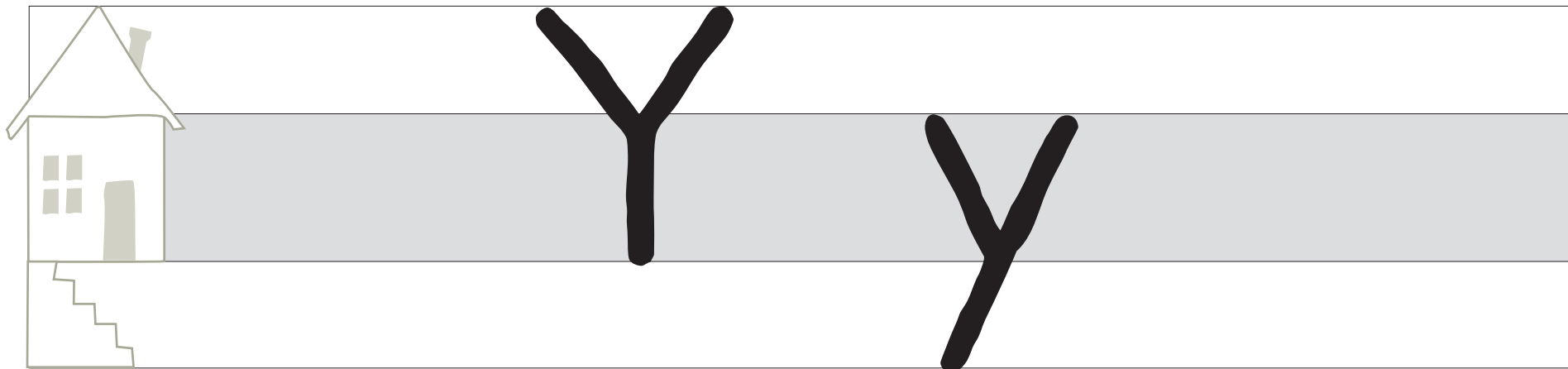


Qu qu

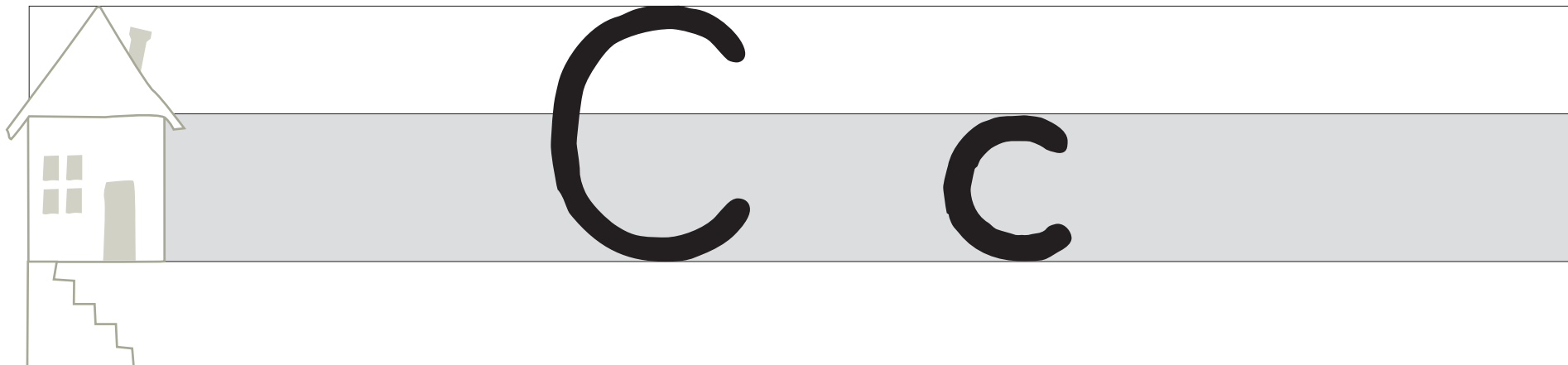


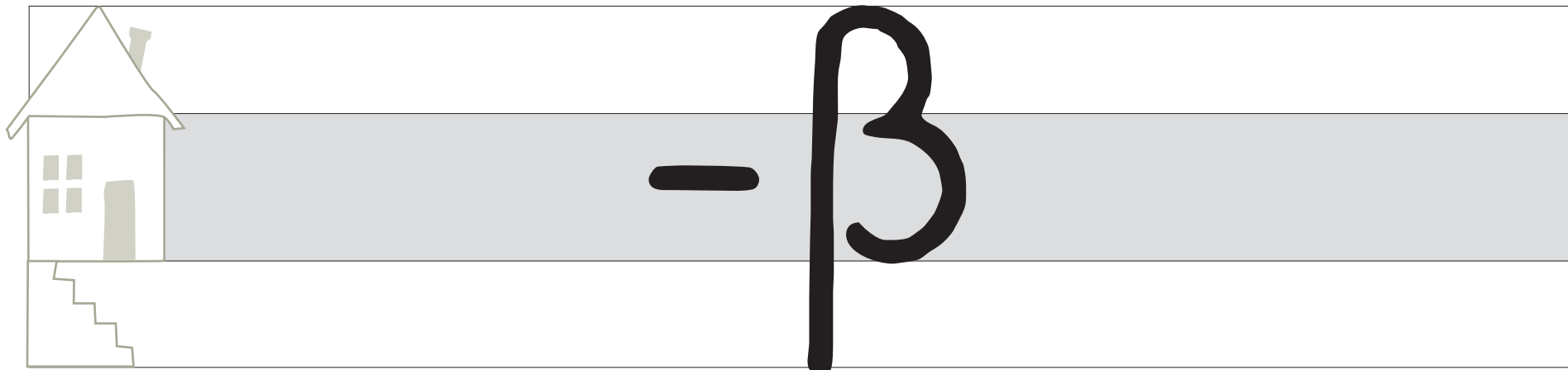




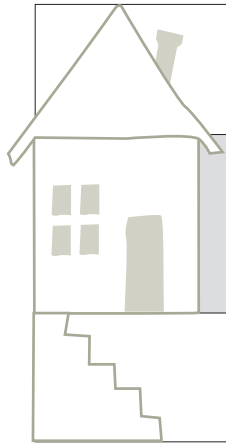


Ypsilon





Fuß



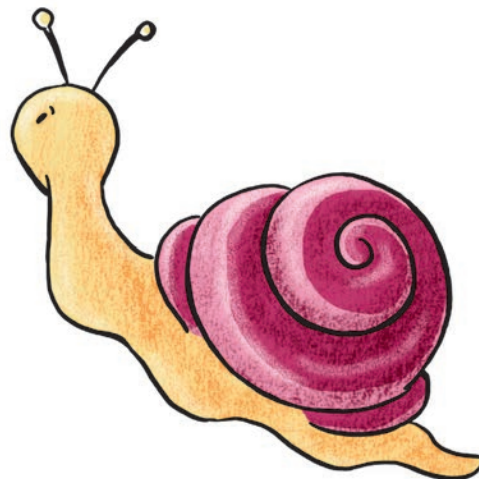
-ng



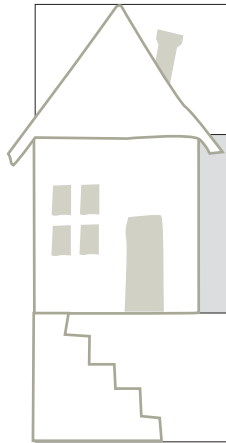
Ring



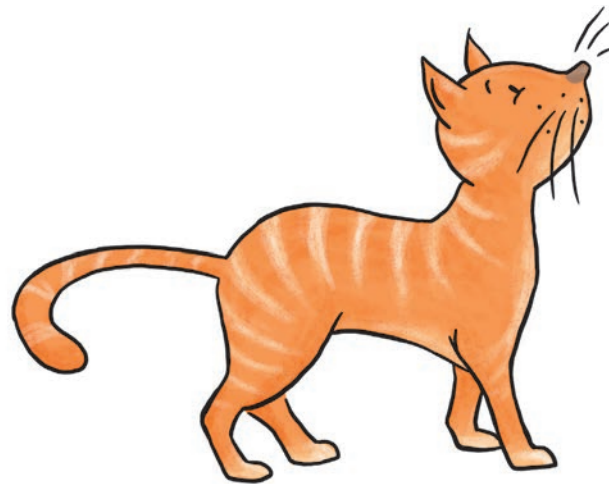
-ck



Schnecke



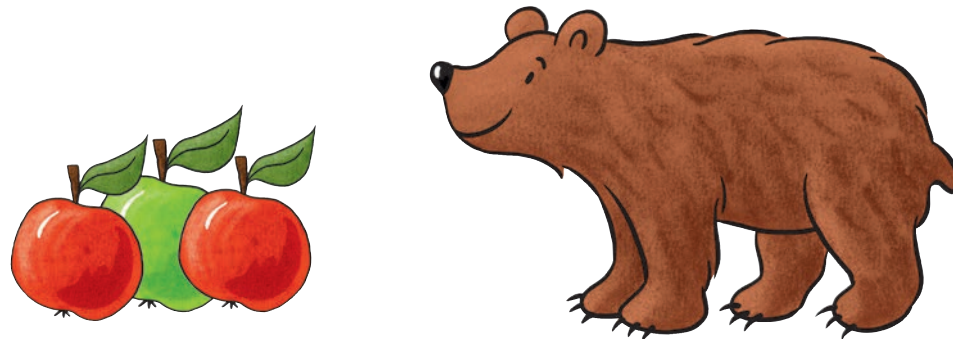
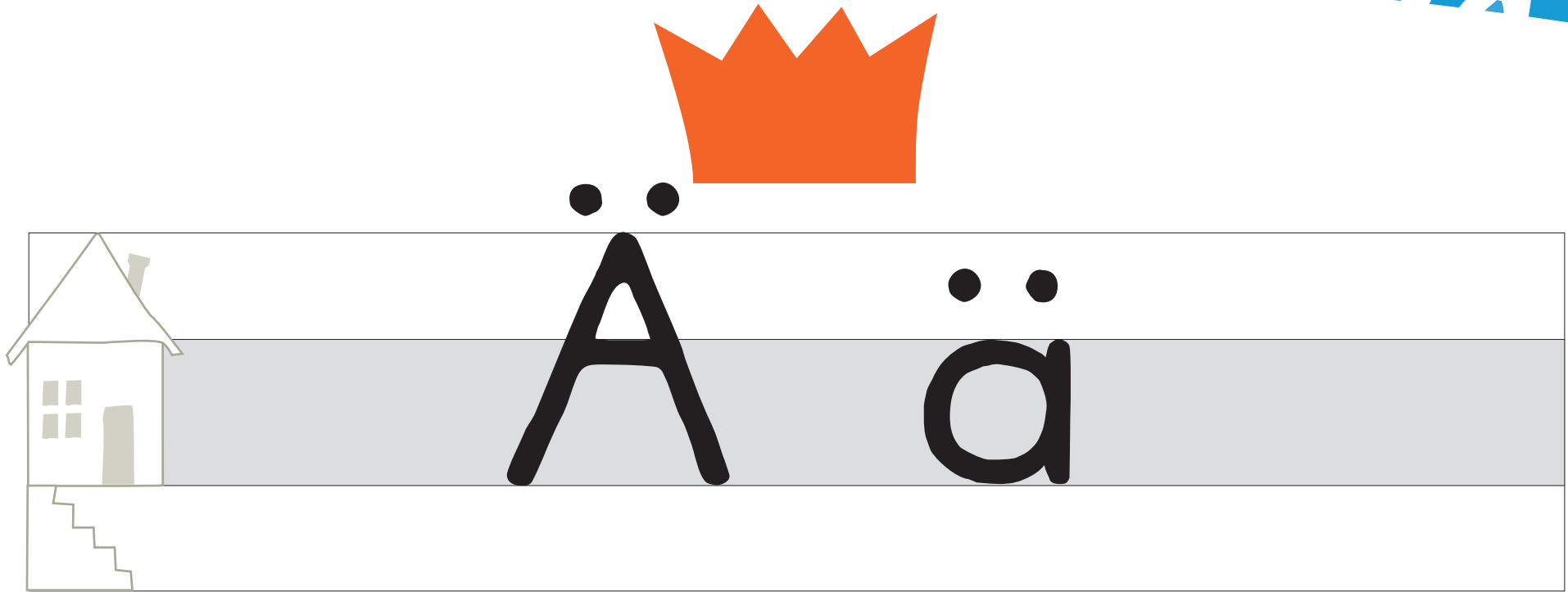
-tz



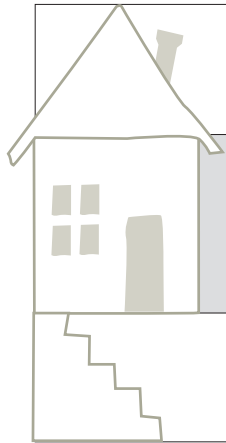
Katze



Riese



Äpfel, Bär



-äü



Mäuse

Das Werk und seine Teile sind urheberrechtlich geschützt. Jede Nutzung in anderen als den gesetzlich zugelassenen Fällen bedarf der vorherigen schriftlichen Einwilligung des Verlages. Hinweis § 52 a UrhG: Weder das Werk noch seine Teile dürfen ohne eine solche Einwilligung eingescannt und in ein Netzwerk eingestellt werden. Dies gilt auch für Intranets von Schulen und sonstigen Bildungseinrichtungen. Fotomechanische oder andere Wiedergabeverfahren nur mit Genehmigung des Verlages.

© Ernst Klett Verlag GmbH, Stuttgart 2018. Alle Rechte vorbehalten. www.klett.de

Redaktion: Dr. Michael Schlien
Herstellung: Sabine Banse

Illustrationen: Friederike Ablang, Berlin; Anke Fröhlich, Leipzig;
Verena Ballhaus, München



Die **Zebra** Lautbilder

- zeigen jeden Buchstaben und die Buchstabenkombinationen der Schreibtabelle im Großformat
- sind zum Aufhängen im Klassenzimmer gedacht
- unterstützen den Schriftspracherwerb und das Erlernen einer verbundenen Schrift im Anfangsunterricht

Zebra online

www.zebrafanclub.de

